

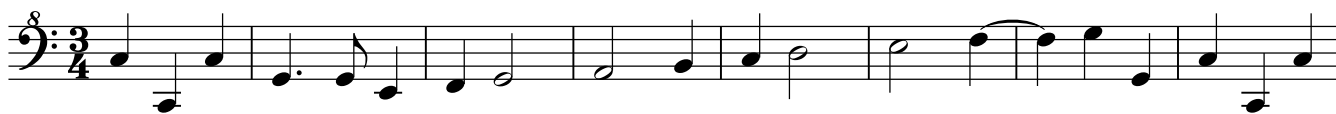
Great Bass

Chaconne

John Blow (1649-1708)

Arr. by Alan Lane

♩ = 66 **A**



29 **B** ♩ = 72



35 **C** ♩ = 63



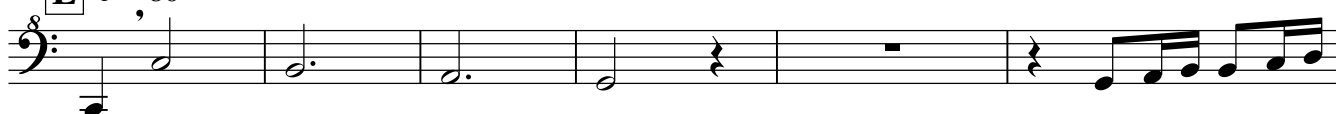
43 **D** ♩ = 72



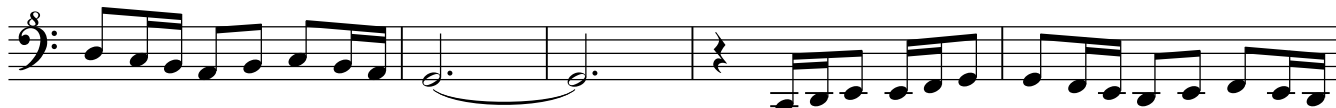
47



53 **E** ♩ = 80



59



64



71 **F**



76



82 **G** ♩ = 48



89



96 **H** ♩ = 80



104



109



115



117



122 **I** ♩. = 60

Musical staff 122, starting with a first ending bracket labeled '2'. The staff contains a sequence of notes including quarter notes, eighth notes, and a dotted quarter note.

128

Musical staff 128, continuing the melodic line with eighth and quarter notes.

133

Musical staff 133, featuring a more active eighth-note pattern.

137

Musical staff 137, showing a steady eighth-note accompaniment.

142

Musical staff 142, continuing the eighth-note accompaniment.

147

J ♩. = 63

Musical staff 147, starting with a second ending bracket labeled 'J' and a change to 3/4 time signature.

152

Musical staff 152, continuing the eighth-note accompaniment.

158

Musical staff 158, continuing the eighth-note accompaniment.

163

Musical staff 163, continuing the eighth-note accompaniment and ending with a double bar line.